

Model 9400

Your home is truly a reflection of you. It only makes sense that your garage door should also convey your personal style and taste. Now, there's a Wayne-Dalton garage door that speaks eloquently of you.

Wayne-Dalton Model 9400 doors are rugged, low-maintenance and insulated sectional steel doors. These doors can be custom painted to match any home's exterior.

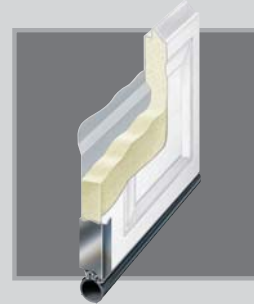
Whichever model Wayne-Dalton Garage Door you choose, you'll get the latest technology and safety features along with curb appeal, comfort and value. The hinges and hardware are galvanized steel; the panels are made with corrosion-resistant materials for long lasting beauty.

PINCH-RESISTANT DOOR PANELS



Pinch-resistant door panels are designed so closing sections actually push fingers safely out of harm's way.

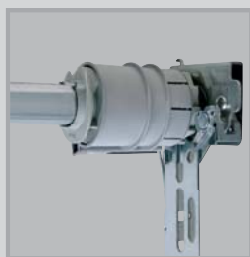
ENERGY EFFICIENCY



The foamed-in-place R-10* polyurethane insulation improves the energy efficiency of a home and blocks unwanted street noise from entering living areas that adjoin the garage. The Tough-Guard vinyl backer adds beauty and durability to the interior of the garage door.

*Insulation values have been calculated in compliance with DASMA TDS-163 industry standards.

TORQUEMASTER® PLUS COUNTERBALANCE



The Wayne-Dalton TorqueMaster® Plus is the first counterbalance system to seal springs safely within a steel tube. It contains an anti-drop feature that eliminates the risk of door "free fall" and prevents potential serious injury.



Garage Door Design Center
www.Wayne-Dalton.com



Upload your home today!

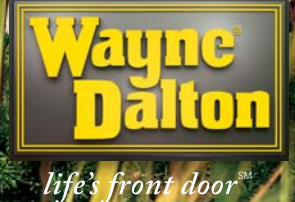
1. Upload a photo of your home, instant curb appeal awaits.
2. Experiment with panel designs, color options, and window styles!
3. View the results, and find your closest Wayne-Dalton Dealer.



Item 325814 03.10.
www.Wayne-Dalton.com
 © 2010 Wayne-Dalton One Door Drive, PO Box 67 Mt. Hope, Ohio 44660

series

BUILDER'S CHOICE STEEL GARAGE DOORS



Model 9400 Panel Designs



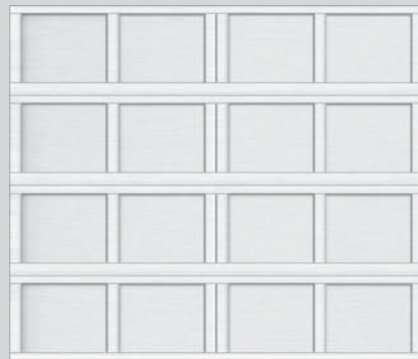
Charleston



Lexington



Westfield



Newport



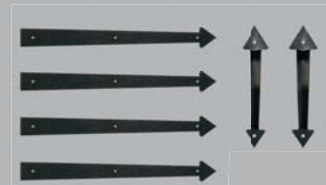
Providence



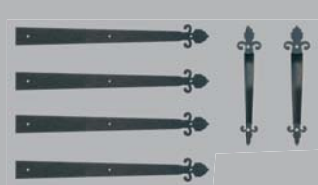
Oakpark

Model 9400 is available only in the sizes of 8', 9', 10', 15', 16', 18' wide by 7' and 8' high. Panel designs are available in white only.

Optional Decorative Hardware



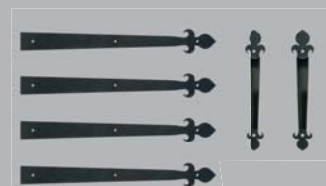
Arrow



Barcelona



Spear



Fleur De Lis



Conifer



Aspen

For our full decorative hardware offering, see dealer for details.

StyleLine™ Window Designs

StyleLine window designs are available in a variety of architectural styles



Clear



Stockton III



Arched Stockton



Stockbridge



Cascade III



Waterton III



Upon special request, Arched Stockton and Stockton III can be combined on double wide doors

* Lites are shown on a 9' x 8' door. Spacing of lites may change depending on door size.



Wayne-Dalton warrants your Model 9400 door sections for as long as you own them against cracking or splitting due to rust-through and against degradation of the foam insulation. See full warranty for complete details.